

THE SELF-COMPACTING CONCRETE TUNNEL LINING SYSTEM

Technical Information

FEATURES OF NEW METHOD

Feature 1

No Vibrator works are required

- Self Compaction Concrete.
- No vibrator works are required.
- Dangerous works can be minimized

Feature 2

No requirement of pipe switching

- No requirement of pipe switching.
- Number of workers can be saved.

Feature 3

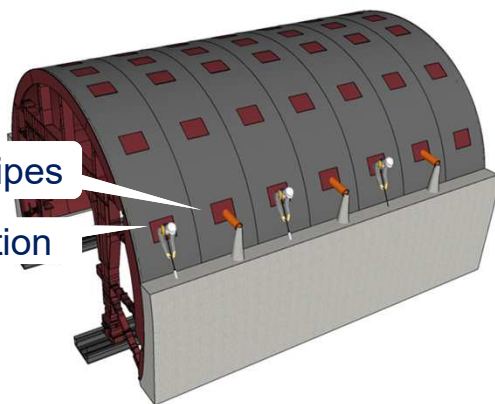
Risk of concrete initial defects can be reduced

- Risk of concrete initial defects can be reduced.

CONVENTIONAL vs NEW METHOD

Conventional

Switching supply pipes
Vibratory compaction



New

No switching supply pipes
No vibratory compaction

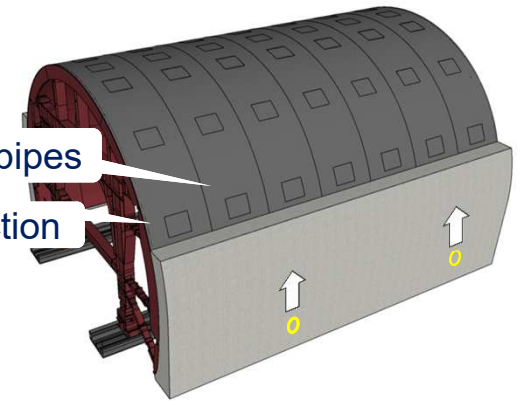
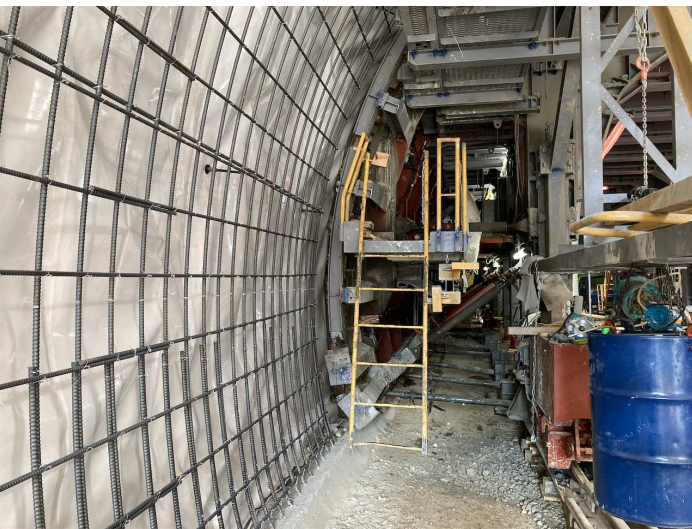


Figure-1 Comparison of conventional to new construction methods

SELF-COMPACTATION CONCRETE PLACEMENT AT ASHIZE TUNNEL

We applied this new method to *Ashize Tunnel (Nagano Prefecture Iida Construction Office)* in 2023.



Picture-1 Construction situation



Picture-3 Monitoring



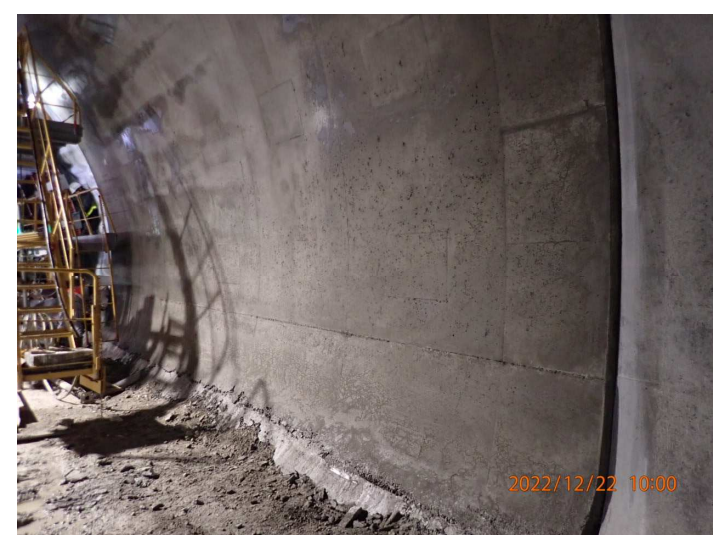
Picture-5 Compilation of placement



Picture-2 Pumping



Picture-4 Conducting by three workers



Picture-6 No air voids