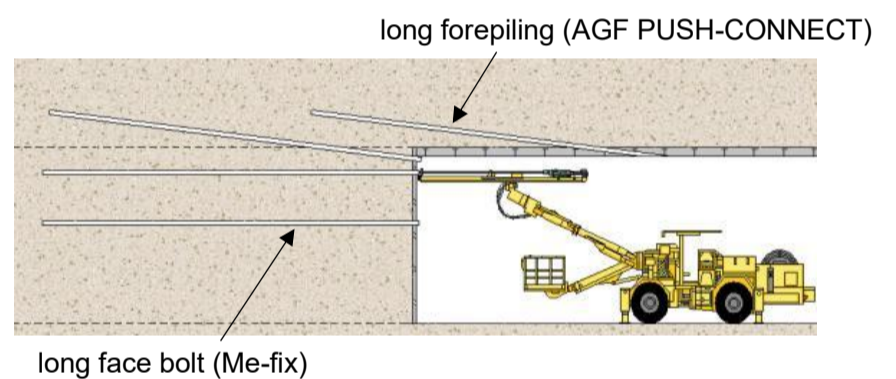
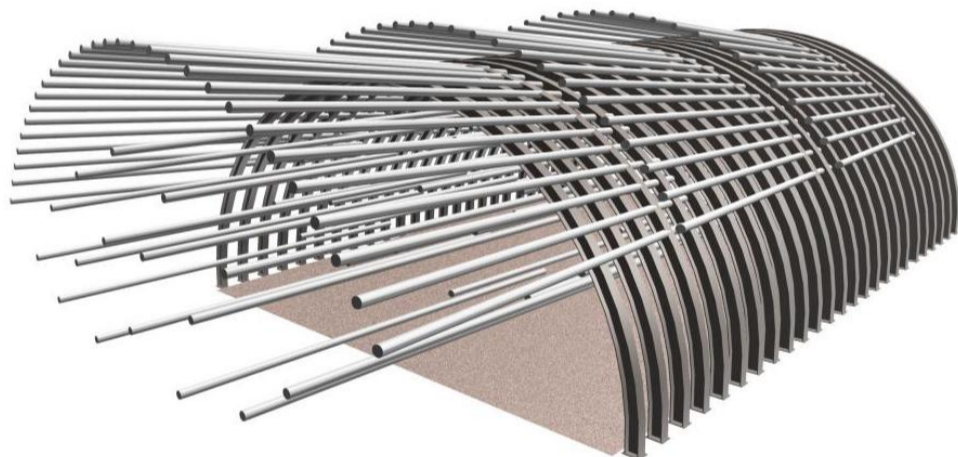


We are KFC.

Providing Materials for Tunnel Construction.

KFC Pre-Support Method for Tunneling



AGF PUSH-CONNECT

“AGF PUSH-CONNECT” is a long forepiling system and a newly developed construction method designed to reduce labor and shorten the time required for connection work.

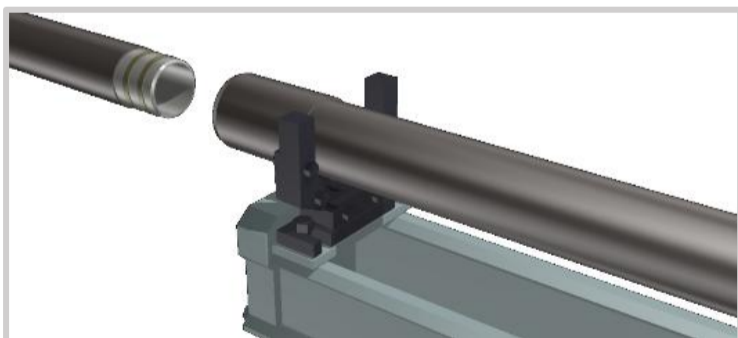


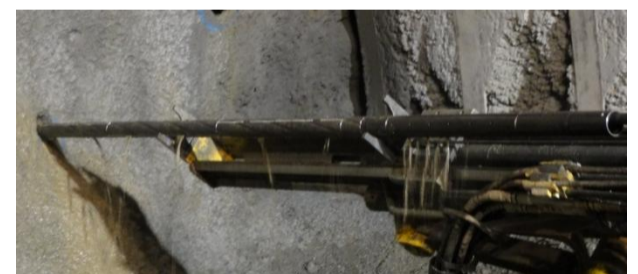
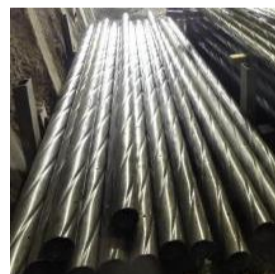
Illustration of a socket-type connection with simple plug-in installation



Steel Pipe Insertion Device

Me-fix

“Me-fix” is a long face bolt made of a special steel pipe, designed to improve the bond strength between the steel pipe and grout.



	Standard Steel Pipe	Me-fix
Diameter (mm)	76.3	76.3
Steel Pipe Surface Overview		
bond strength (kN/m)	50	150
Ground Strain Diagram		

KFC Ltd.