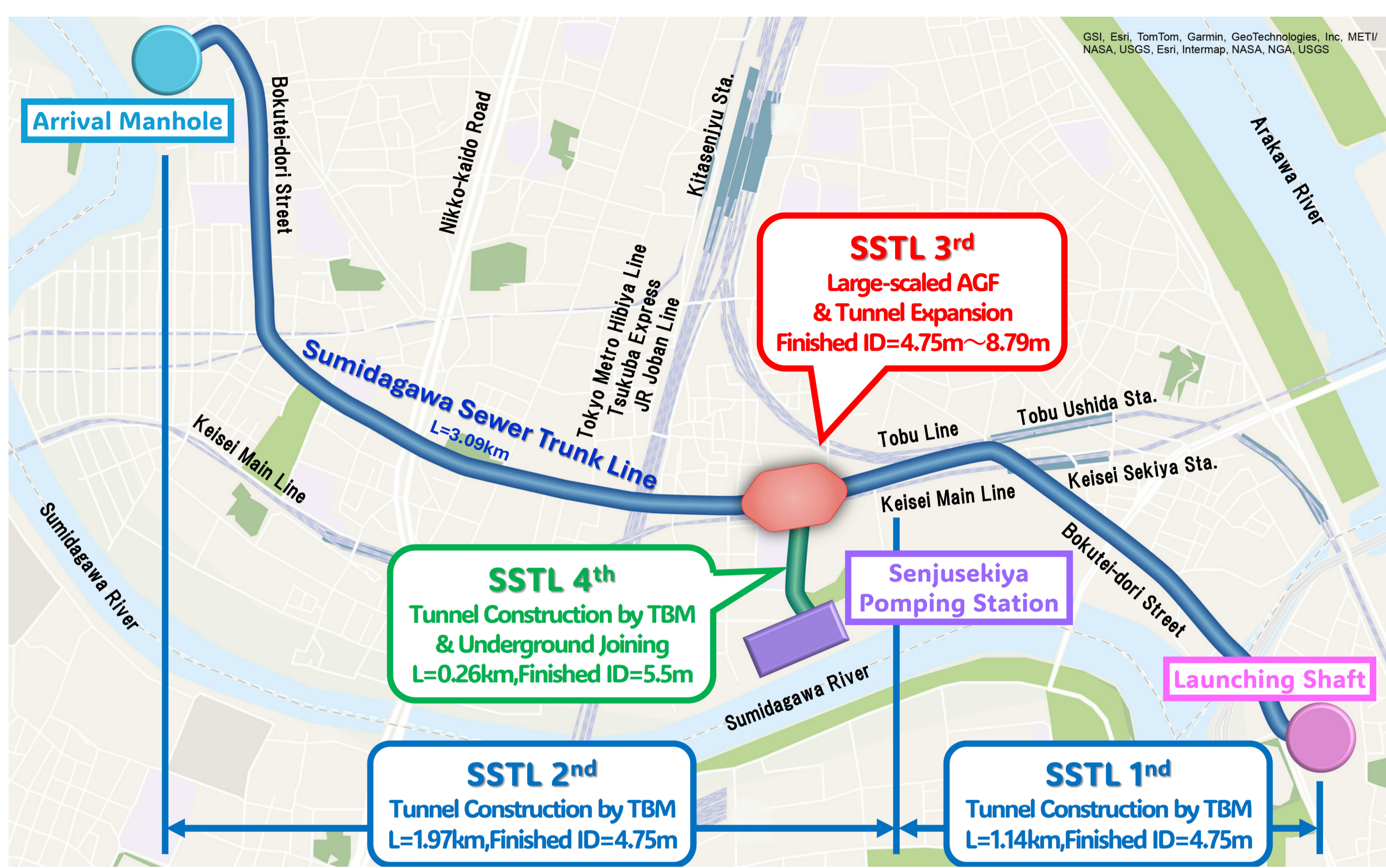


Sumidagawa Sewer Trunk Line (SSTL) 3rd & 4th Project

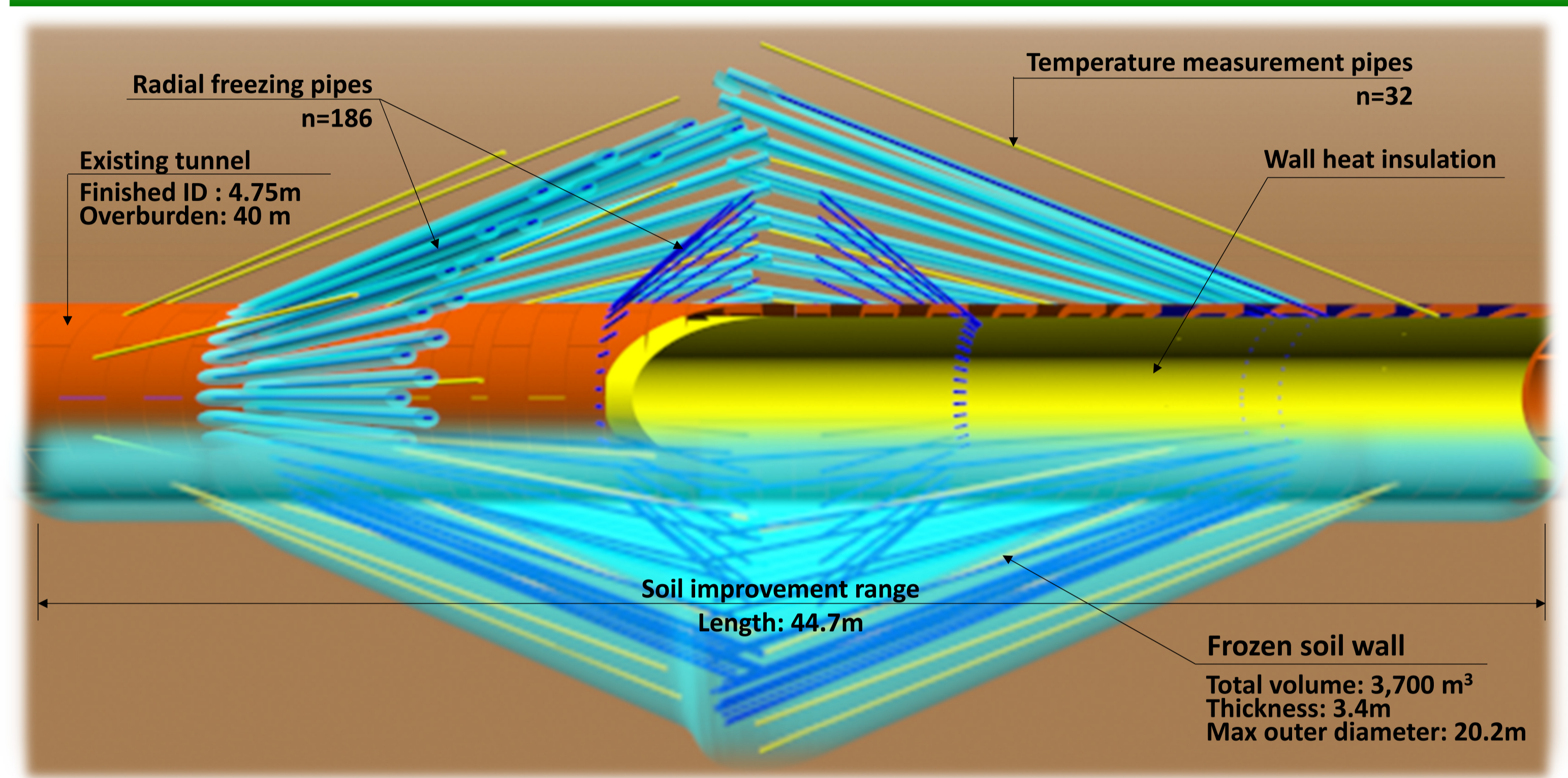
Building the future on new foundations
TOKYU CONSTRUCTION

Project Overview

Project Name	<ul style="list-style-type: none"> ➢ Sumidagawa Sewer Trunk Line 3rd Project (SSTL 3rd) ➢ Sumidagawa Sewer Trunk Line 4th Project (SSTL 4th)
Location	Tokyo, Japan
Purpose	To enhance the rainwater discharge capacity of Senju area in Adachi-ku between the Arakawa and the Sumidagawa rivers.
Construction Content	<ul style="list-style-type: none"> ➢ SSTL 3rd <ul style="list-style-type: none"> • Soil improvement work (AGF) : 3,700m³ • Tunnel expansion work : Length 19.7m, Finished inner diameter : 4.75m~8.79m ➢ SSTL 4th <ul style="list-style-type: none"> • Tunneling work (Slurry TBM) : Length 269.15m, Finished inner diameter : 5.5m • Secondary lining work : Length 19.7m, Finished inner diameter : 4.75m~7.4m
Client/ Employer	Bureau of Sewerage Tokyo Metropolitan Government
Contractor	Tokyu Construction Co., Ltd.
Completion	<ul style="list-style-type: none"> ➢ SSTL 3rd : Mar. 2019 ➢ SSTL 4th : Nov. 2019



Planned Route Map



Planned Frozen Soil Wall



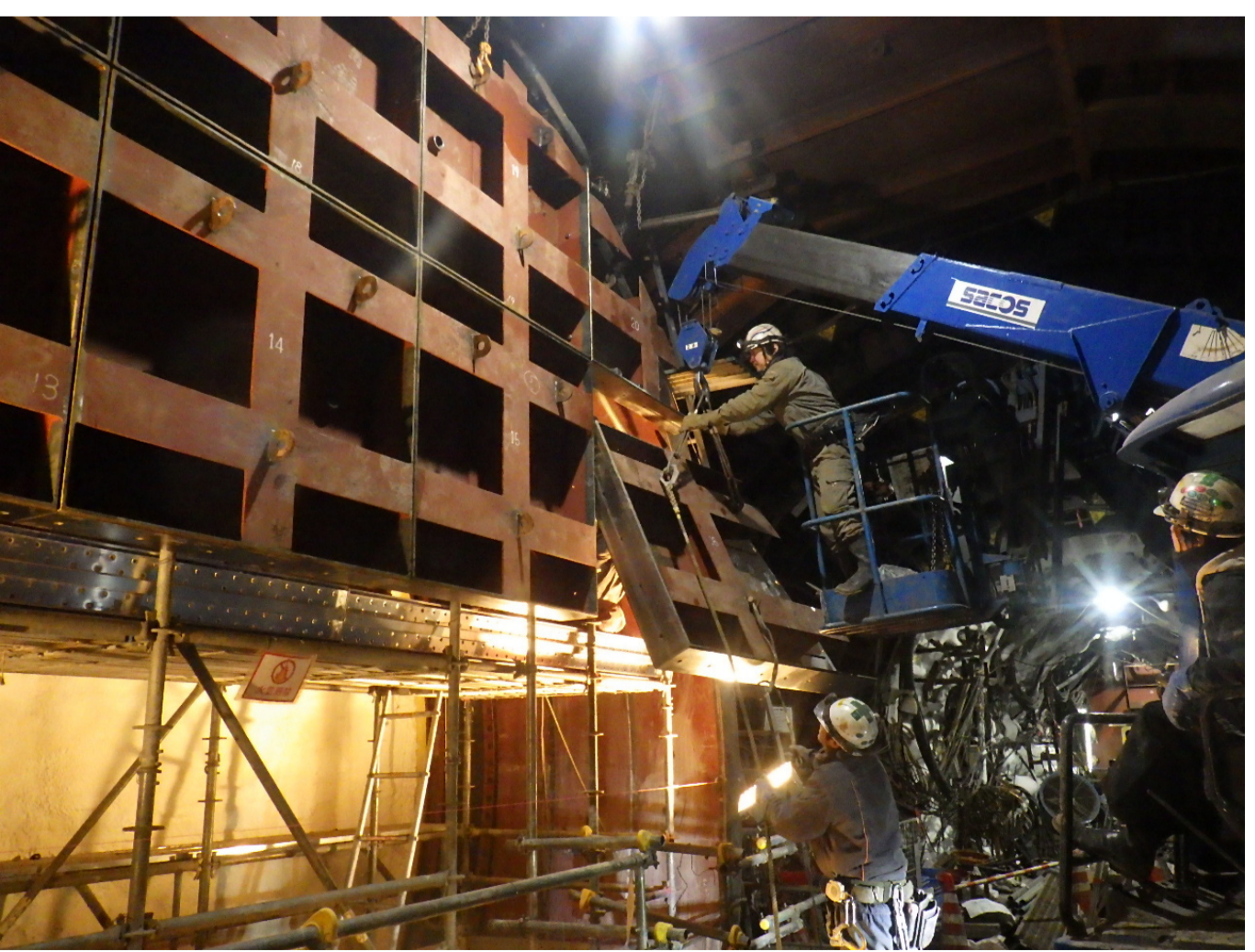
1. Formation of Frozen Soil



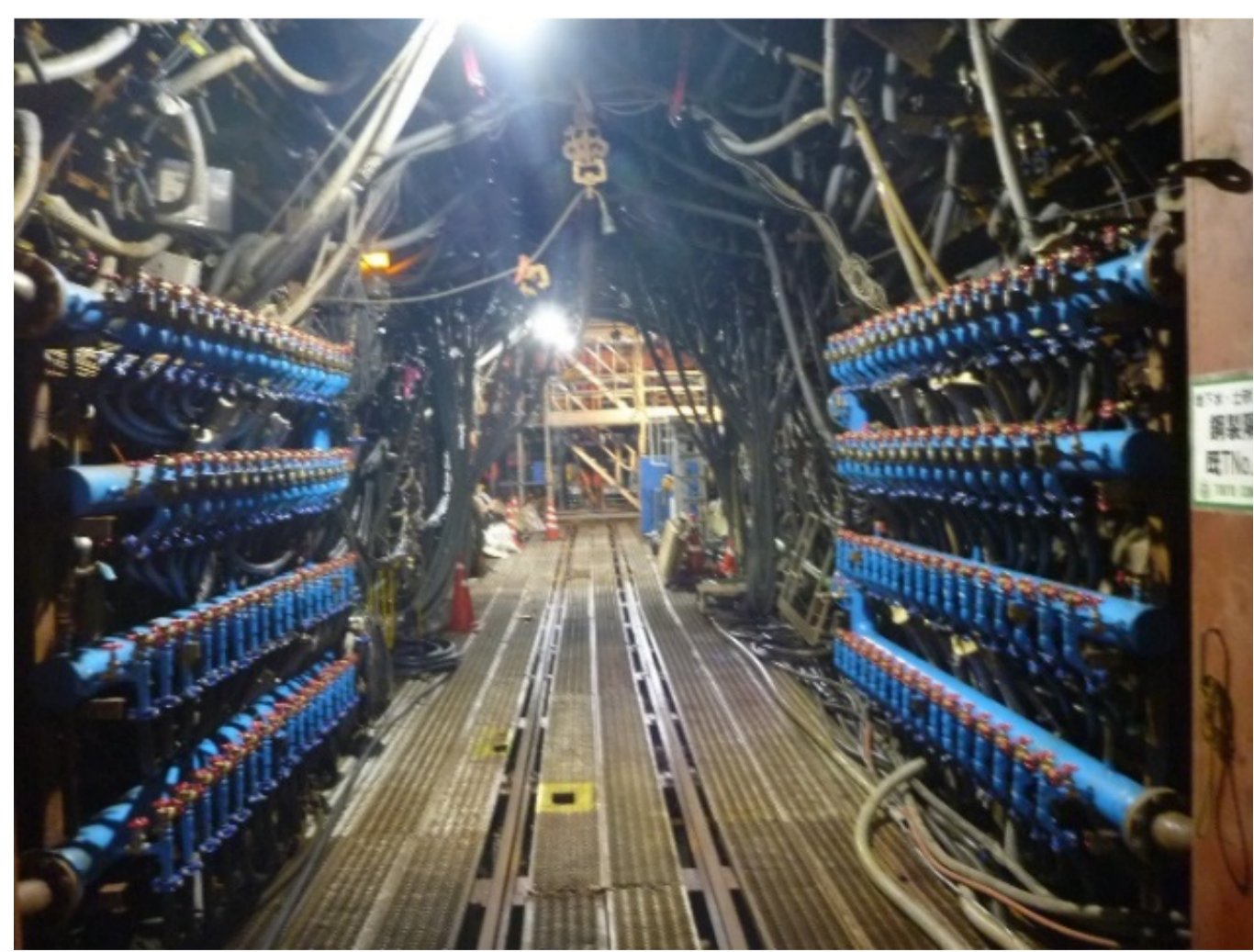
2. Excavation of Frozen Soil



3. Assembly of Segments



4. Installation of Entrance Device



5. Enforced Thawing



6. Completion of Connection