

# START!

Safety Technology Activation Renewal Tunnel

The Nihonbashi Section Opened in 1963 Prior to the 1964 Tokyo Olympics to Meet the Rapidly Growing Motorization and Traffic Demand. The Expressway was Built over Bridges and Rivers due to the High Density of Buildings. With its Historic "Nihonbashi Bridge" Designated as the Starting Point of Five Major Roads, the City has Developed as the Country's Commercial and Distribution Center.

## 1. TOWARDS SAFER AND SECURER ROADS

Secure Long-Term Durability and Maintainability of Roads  
**THE NECESSITY OF A MAJOR RENOVATION OF THE METROPOLITAN EXPRESSWAY**

The Nihonbashi Section is used by Approximately 100,000 Vehicles Each Day. Almost 60 Years has Passed Since its Opening, and its Aging and Damaged Structures are now in Need of Major Renovation.



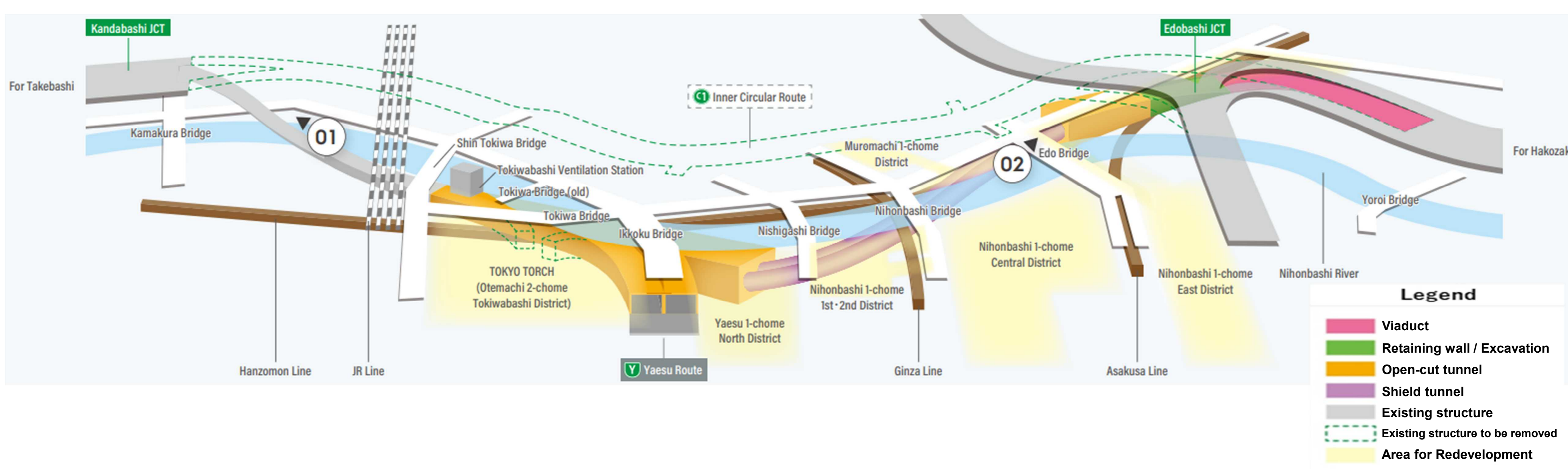
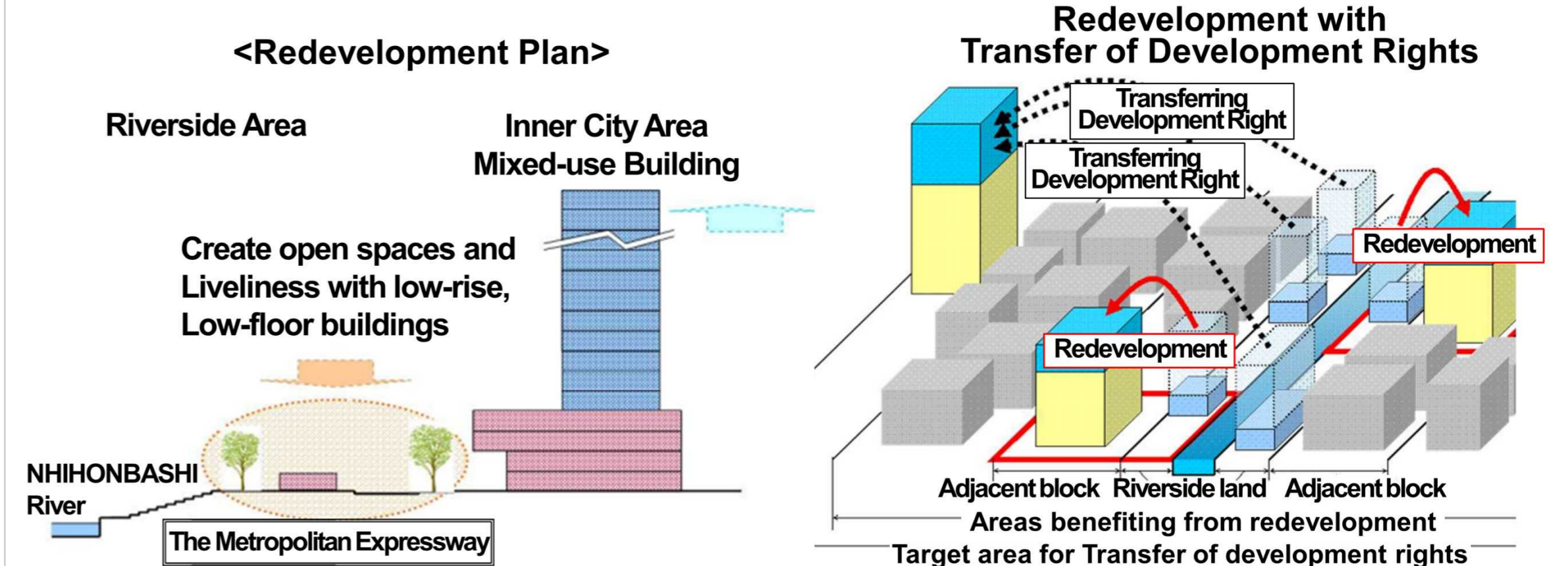
## 2. COOPERATION WITH THE REDEVELOPMENT PROJECT AROUND THE NIHONBASHI RIVER

Develop a Nostalgic and Vibrant Cityscape around the NIHONBASHI River

### FOR A NEW NIHONBASHI CITY THE MULTI-LEVEL ROAD SYSTEM

NIHONBASHI is designated as an Urban Revitalization Area of the Special Economic Zone, where Many Redevelopment Projects are Ongoing.

The Multi-Level Road System allows the Construction of Buildings Directly Above and Below a Designated Right-Of-Way.



## 3. RENOVATION OF THE ROAD FOR THE NEXT 100 YEARS INTO THE FUTURE

Contribute to Improving the Attractiveness of the Area through Urban Regeneration

### FUTURE NIHONBASHI

- ◆ "Nihonbashi River Walk" is the name of the area which the Metropolitan Expressway Nihonbashi Section Underground Relocation Project and five redevelopment projects are cooperating with one another to advance the creation of a neighborhood open to the sky and river.
- ◆ Going forward, tunnel construction and redevelopment will proceed in parallel, with viaduct removal scheduled for completion around 2040 after the expressway has been relocated underground.
- ◆ The removal of the viaduct will reunite the sky and the river, giving rise to a lush waterfront space in very close proximity to Tokyo Station, where people can enjoy nature and riverfront scenery across a stretch approximately 100 m wide and 1,200 m long.

By around 2040, removal of the Metropolitan Expressway viaduct will restore a lush waterfront space that reunites the sky and the river



SOURCE : Nihonbashi River Walk Press-Release Material (June 11, 2025)

## 4. BLUE SKY OVER THE NIHONBASHI RIVER

Once the Existing Viaduct is Removed, the Historic NIHONBASHI will be Widely Open to the Blue Sky.



Note: All computer-generated images and renderings used in this release are conceptual and do not represent the actual details of the plan.